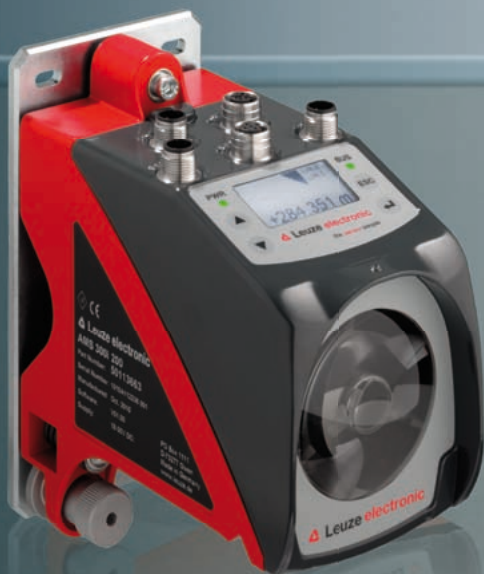


the **sensor** people

Laser distance measurement device **AMS 300i**

The top of the class convinces with maximum accuracy and a variety of integrated interfaces



Without compromise in regard to **accuracy** –
“unlimited” in regard to **interface selection**.

The new AMS 300*i* – leading in measuring dynamic, functionality and fieldbus connectivity.

The AMS 300*i* is used wherever position data of moving system components, such as e.g. in high-bay warehouses are calculated. A unique selection of **industrial Ethernet**, supplemented with all well-known fieldbus interfaces, makes the AMS 300*i* a “global player”. Distances of up to 300 m are calculated by the use of the most modern signal processors with maximum accuracy in the ms grid. Borderline situations can be detected and indicated with the integrated, extensive functionality catalog.

- Unique selection of industrial Ethernet interfaces for international use
- Speeds or configured borderline situations can be calculated and monitored at the same time as the position
- Red light laser for easy alignment and real-time position measurement
- Up to 300 m measurement distance, with millimeter accuracy for process-exact positioning and optimal space utilization
- Unique device with an absolute accuracy of ± 2 mm to ± 5 mm, inspected by the Physikalisch Technische Bundesanstalt, dependant on the operating range
- Intelligent mounting solution for the easy alignment and locking of the set alignment
- Efficient damping with spring elements for ensuring vibration decoupled measurement data
- Well accessible, compact connection field for all interfaces with standard M12 industrial connectors
- Clear text display in 5 languages for international use

One device – **many** advantages.

A connection field

M12 standard connectors for all integrated interfaces.



Clear text display

All relevant configuration data in 5 languages.



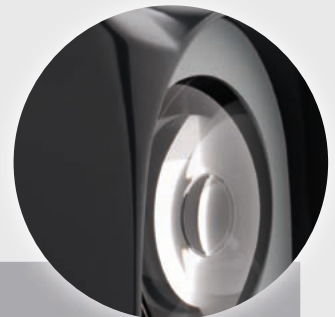
Reeling ball

Absolute accuracy even after mounting and alignment.



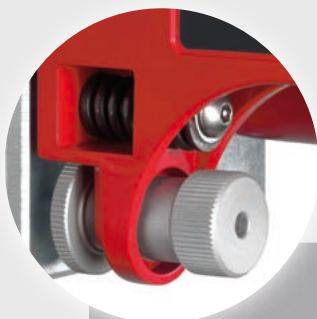
High-end optics

0.2 m to 300 m operating range with maximum accuracy.



Mounting unit

Decoupled alignment and locking unit with integrated vibration damping.



High-speed signal processors

Maximum measuring dynamic and data processing for control circuits and process monitoring.



Many claim to offer **a variety of integrated interfaces** – only the AMS 300*i* offers 10 integrated options.

RS232

RS422

RS485

INTERBUS

**PROFI
BUS**

SSI

**PROFI
NET**

AMS 300*i*

- Configuration via display
- Baud rate
9.6 – 115.2 kbit/s
- Simple binary protocol

AMS 301*i*

- Configuration via display
- Baud rate
9.6 – 115.2 kbit/s
- Simple binary protocol

AMS 384*i*

- Configuration via display
- Baud rate
500 kbit/s /
2 Mbit/s

AMS 304*i*

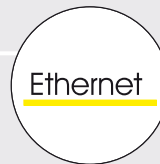
- Direct configuration via Profibus (GSD)
- Simultaneous operation of PROFIBUS and SSI
- Baud rate
PROFIBUS: 12 Mbit/s
SSI: 50 – 800 KHz

AMS 348*i*

- Integrated Switch
- Baud rate
100 Mbit/s
- Direct configuration via PROFINET (GSD)

All **AMS** are available with:

- Integrated heating down to -30 °C
- M12 connections
- 40 / 120 / 200 / 300 m operating range
- Address setting and diagnosis via display



AMS 355*i*

- Direct configuration via EDS file
- Baud rate 125–500 kbit/s
- Standardized encoder profile
- Configuration via display

AMS 358*i*

- Integrated switch
- Standardized encoder profile
- Baud rate 10/100 Mbit/s
- Display analysis

AMS 335*i*

- Integrated CANopen Interface
- Baud rate 10–1,000 kbit/s
- Configuration via EDS files
- Standardized encoder profile

AMS 338*i*

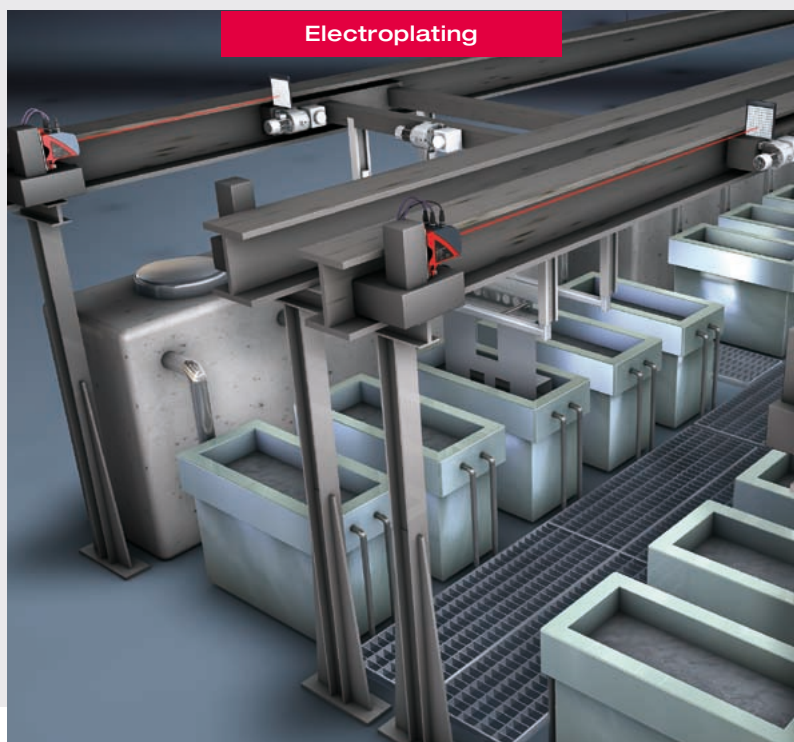
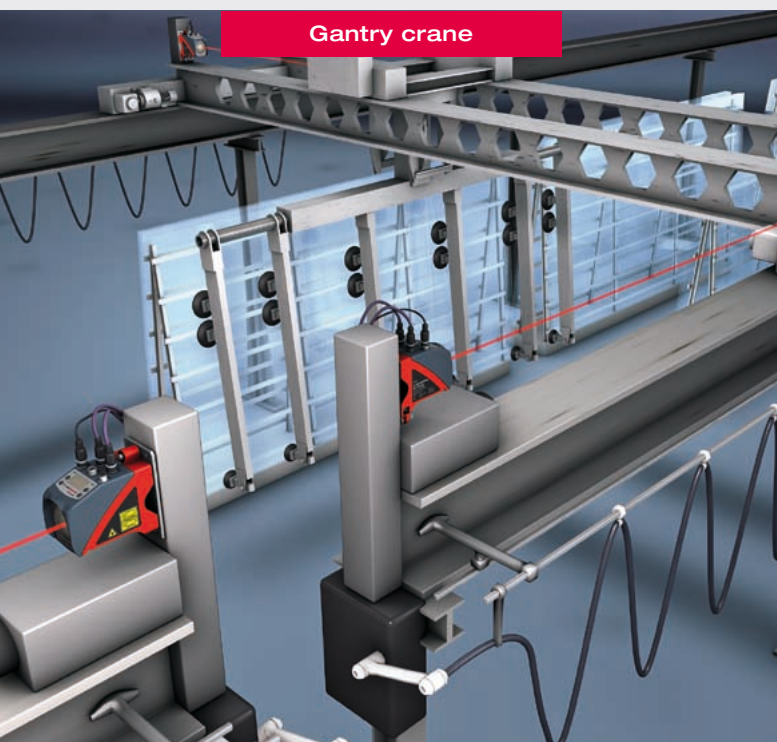
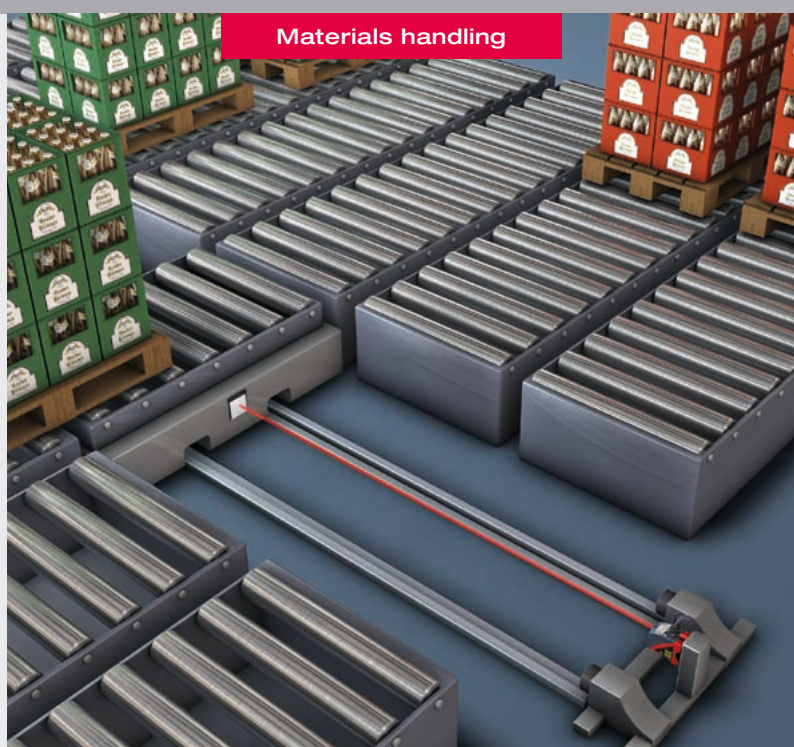
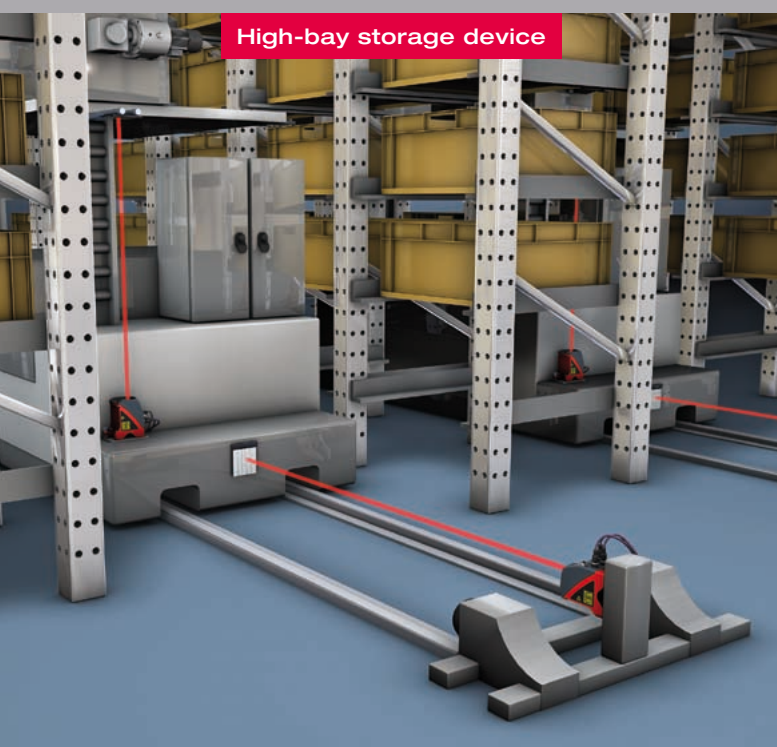
- Configuration via ESI files (XML format)
- Baud rate 10/100 Mbit/s
- Encoder profile

AMS 308*i*




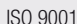
- Integrated Switch
- Integrated TCP/IP Interface
- Baud rate 10/100 Mbit/s
- Configuration via display



Perfectly suited for **precise positioning**
even over **long distances**.



Technical data and accessories of the **AMS family**.

Specifications				
Operating range	0.2–40 m	0.2–120 m	0.2–200 m	0.2–300 m
Accuracy	±2 mm	±2 mm	±3 mm	±5 mm
Consistency/1 sigma	0.3 mm	0.5 mm	0.7 mm	1.5 mm
Light spot diameter	≤40 mm	≤100 mm	≤150 mm	≤220 mm
Max. traverse rate	≤10 m/s			
Electrical data				
Supply voltage	18–30 V DC			
Current consumption	250 mA without heating/500 mA with heating			
Optical data				
Transmitter	Laser diode, red light, wavelength 650–690 nm			
Laser class	Laser class 2 acc. to EN 60825-1; CDRH			
Environmental conditions				
Operating temperature	-5–50 °C without heating / -30–50 °C with heating			
Protection class	IP 65			
Certifications	   			

Accessories

We also have all the necessary accessories for the optimal mounting and connection of our laser distance measurement devices in our product range:

- Reflective tapes
- Heated and unheated pre-mounted reflectors
- Deflection mirror
- Connection cable and connectors





Optoelectronic sensors

Cubic Series
Cylindrical Sensors, Mini Sensors, Fiber Optic Amplifiers
Measuring Sensors
Special Sensors
Light Curtains
Forked Sensors
Double Sheet Monitoring, Splice Detection
Inductive Switches
Accessories

Identification Systems

Data Transmission Systems

Distance Measurement

Barcode Readers
RF-IDent-Systems
Modular Interfacing Units
Industrial Image Processing Systems
Optical Data Transmission Systems
Optical Distance Measurement/Positioning
Mobile Code Readers

Safety Sensors

Safety Systems

Safety Services

Safety Laser Scanners
Safety Light Curtains
Transceivers and Multiple Light Beam Safety Devices
Single Light Beam Safety Devices
AS-i-Safety Product Range
Safety Sensor Technology for PROFIBUS DP
Safety Switches, Safety Locking Devices and Safety Command Devices
Safety Relays
Sensor Accessories and Signal Devices
Safety Engineering Software
Machine Safety Services

Leuze electronic GmbH + Co. KG

In der Braike 1

D-73277 Owen

Phone +49(0)7021/573-0

Fax +49(0)7021/573-199

info@leuze.de

www.leuze.com